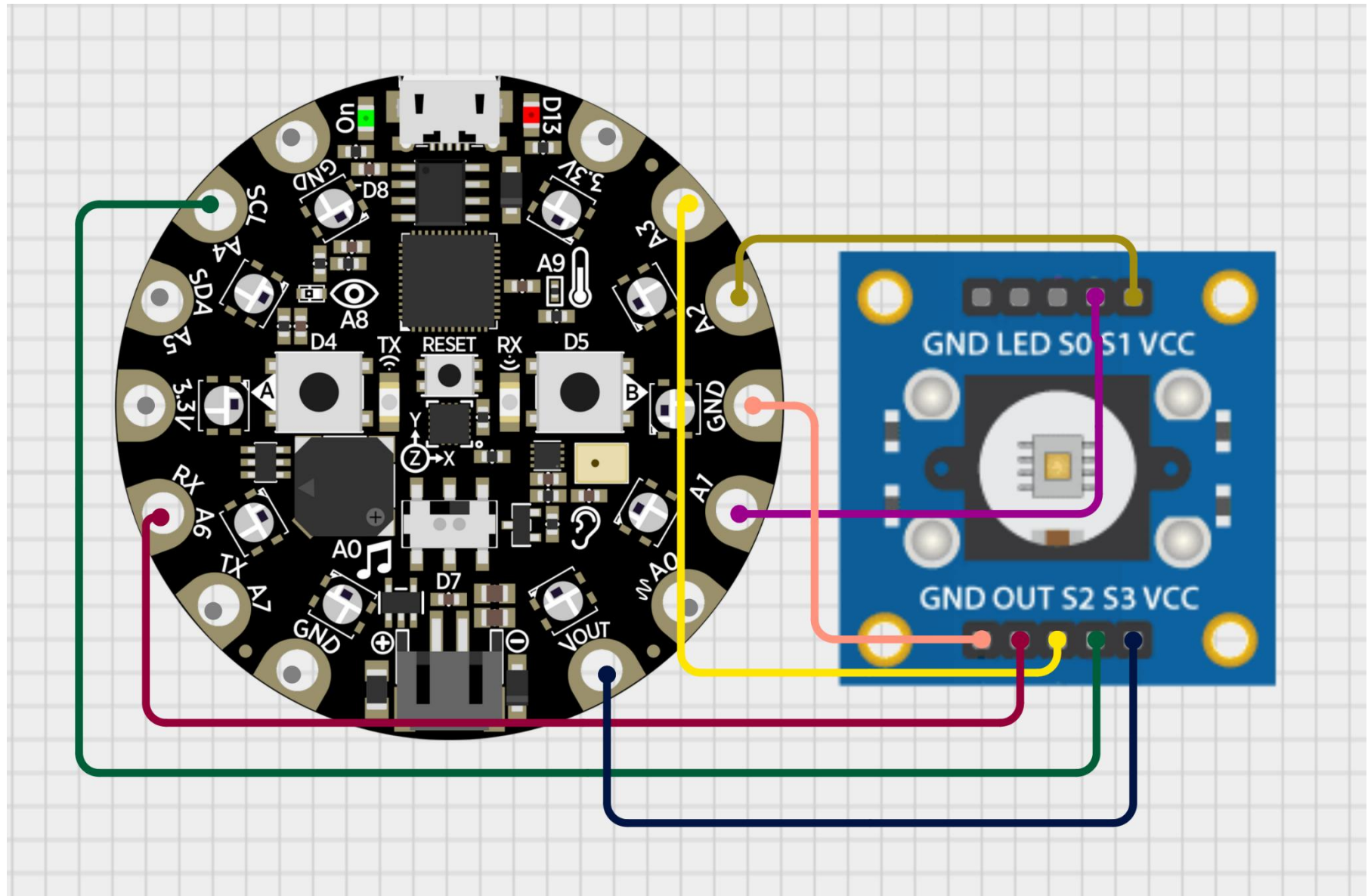


Connection part



S0, S1 pins ■ These are like volume knobs. They control the speed of signals the sensor sends.

S2, S3 pins ■ These are like sunglasses switches. They tell the sensor which color filter to wear: Red, Green, Blue, or Clear.

OUT pin ■ This is the sensor's mouth. It talks in pulses (ON/OFF signals)